

Part number:

HYDROMA

HYDRAULICKÉ SYSTÉMY

**HIDROMA
SYSTEMS**

UKŁADY HYDRAULICZNE

HYDROMA

ГИДРАВЛИЧЕСКИЕ СИСТЕМЫ

Solenoid operated valves direct acting spool type
3-way 2-position
Common cavity, Size 08

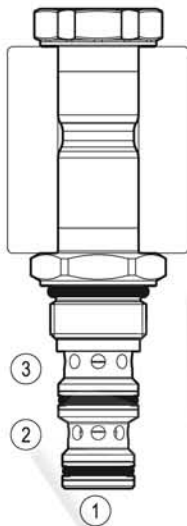
VED-16-08A-32

OD.13 - X - 51 - Y - Z

RE 18324-08

Edition: 11.2017

Replaces: 06.2017

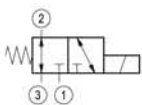


Technical data

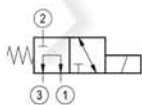
General	
Weight	0.13 kg (0.29 lbs)
Installation orientation	Unrestricted
Ambient temperature range	-30 to 90 °C (-22 to 194 °F)
Hydraulic	
Max. operating pressure	up to 280 bar (4060 psi) *
Max. flow	up to 20 l/min (5 gpm)
Max. internal leakage at 230 bar	40 cm ³ /min. (2.4 cu.in./min.)
Fluid temperature range	-20 to 80 °C (-4 to 176 °F)
Fluids: Mineral-based or synthetics with lubricating properties at viscosities of 20 to 380 mm ² /s (cSt)	
Installation torque	34 - 39 Nm (25 - 29 ft-lbs)
Recommended degree of fluid contamination	Nominal value max. 10 µm (NAS 8) ISO 4406 19/17/14
MTTFd	150 years see RE 18350-51
Cavity	CA-08A-3N see 18325-70
Seal kit	code material no. RG08A3010530100 R901101723
Seal kit coil and standard cap	code material no. RG02Z0010000100 R930067869
Other technical data	See data sheet 18350-50
Electrical	
Type of voltage	DC voltage
Coil type	D36
Supply voltage	See data sheet 18325-90
Admitted voltage tolerance: -10% / +15% of nominal voltage at 60°C amb. T	
Power consumption	20 W
Type of protection	See data sheet 18325-90
Note: Coils must be ordered separately	

* See performance limits at page 3.

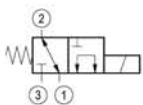
▼ Version 10



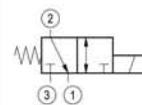
▼ Version 20



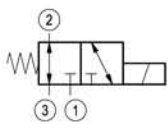
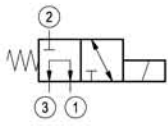
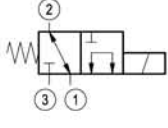
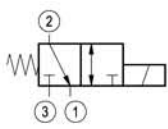
▼ Version 30



▼ Version 11



Ordering code

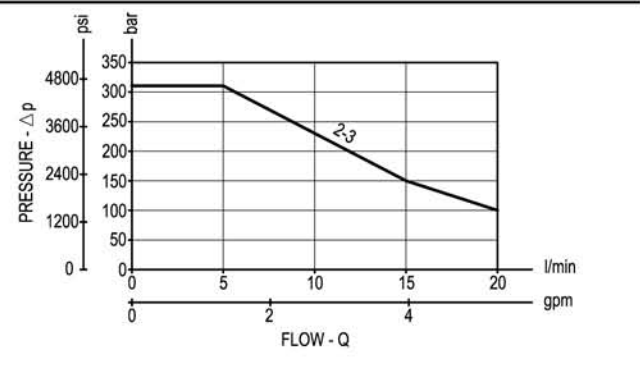
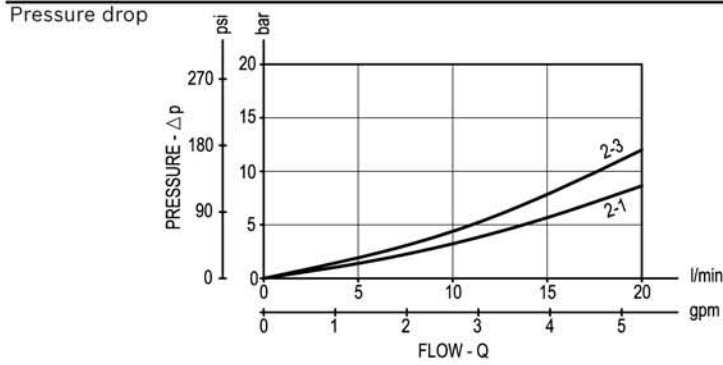
	OD.13	X	51	Y	Z	0000	*
<p>Solenoid operated valves direct acting spool type 3-way 2-position</p>	<p>Series O/A to L unchanged performances and dimensions</p>						
	10						<p>0 = With Buna seal V = With Viton seal</p>
	20						
	30						<p>A = Standard D = Knob style manual override</p>
	11						<p>Common cavity: CA-08A-3N</p>

Type	Material number
OD131051A000000	R930058342
OD131051D000000	R930058707
OD131151A000000	R930058704
OD131151D000000	R930058708
OD132051A000000	R930058703

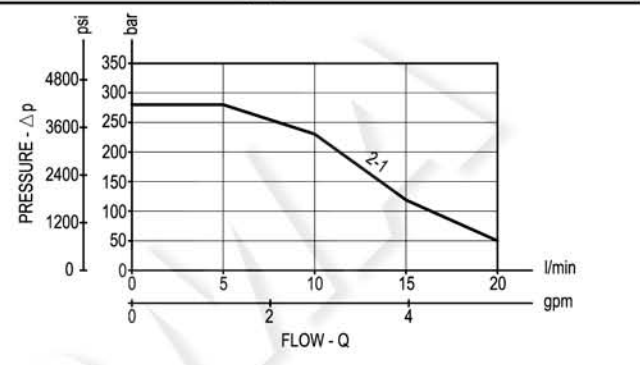
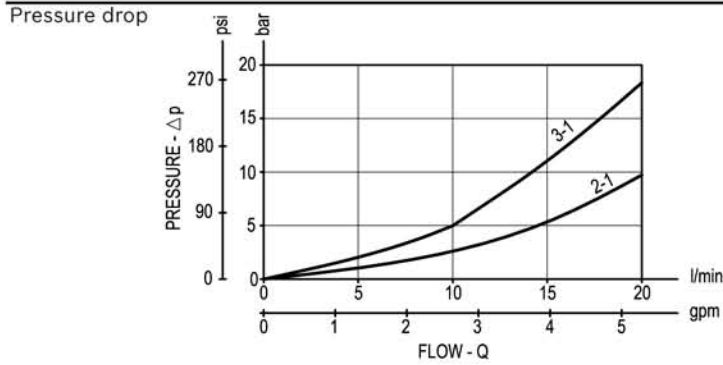
Type	Material number
OD132051D000000	R930058709
OD133051A000000	R930058702
OD133051D000000	R930058710

Characteristic curves

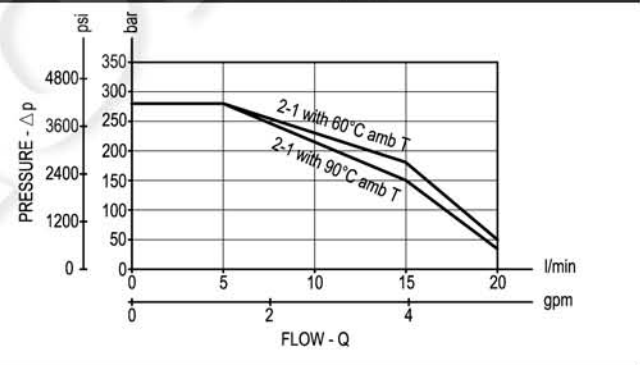
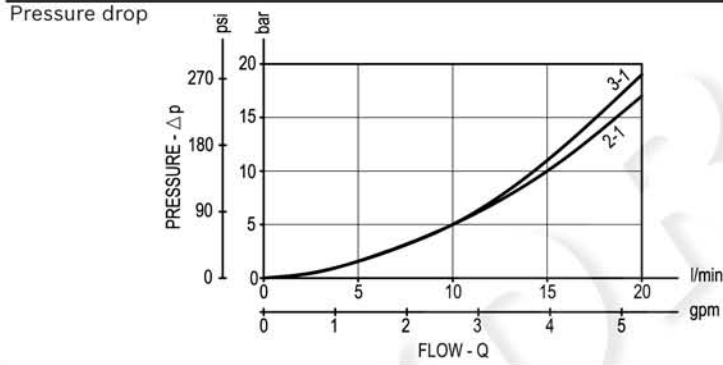
Version 10 Performance limits at 100% duty cycle with 90°C and 60°C amb. T



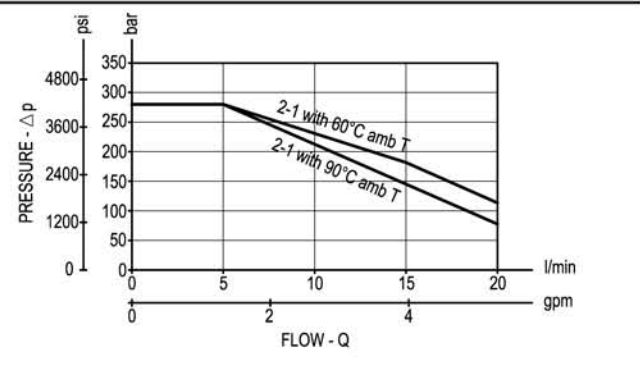
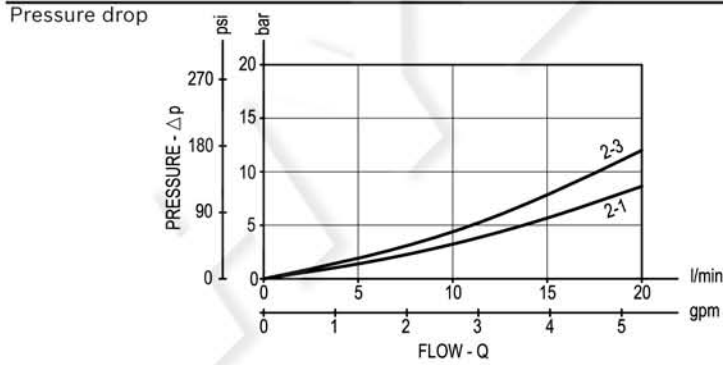
Version 20 Performance limits at 100% duty cycle with 90°C and 60°C amb. T



Version 30 Performance limits at 100% duty cycle



Version 11 Performance limits at 100% duty cycle



Minimum switching voltage for all versions at 100% ED	
Amb. T	Voltage required
60°C	-10% of V nominal
90°C	V nominal

Note: in case of need of performance limits at specific different working conditions, please consult factory.

Dimensions

**Solenoid operated valves, direct acting
spool type 3-way 2-position**

