

Part number:

HYDROMA

HYDRAULICKÉ SYSTÉMY

**HIDROMA
SYSTEMS**

UKŁADY HYDRAULICZNE

HYDROMA

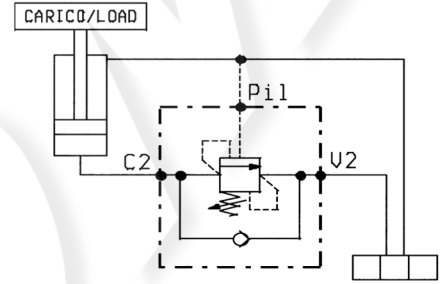
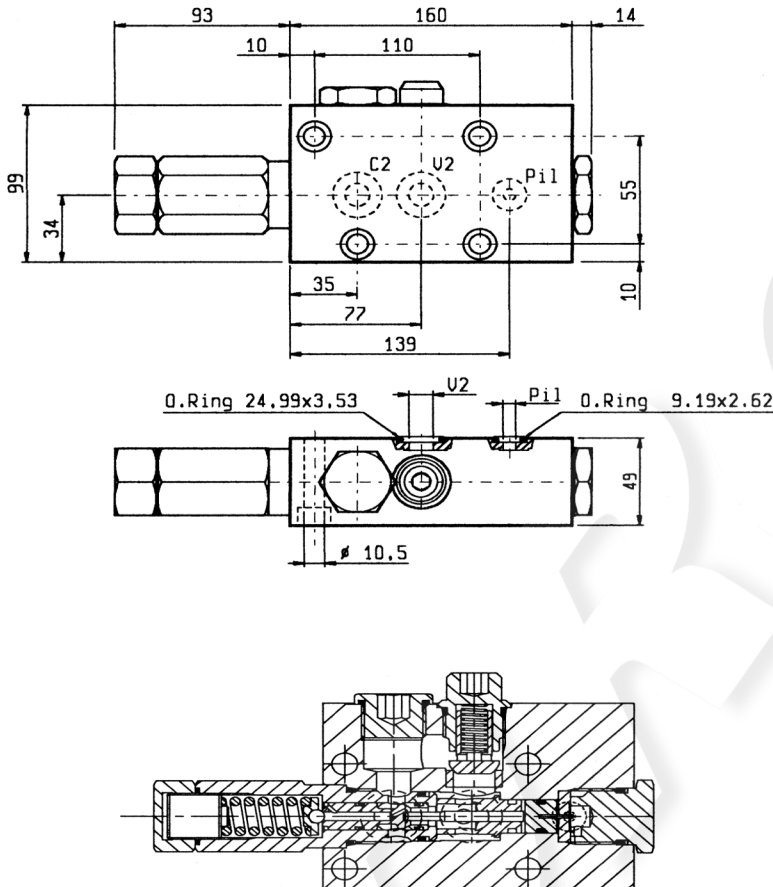
ГИДРАВЛИЧЕСКИЕ СИСТЕМЫ

**BILANCIAMENTO, SEMPLICE EFFETTO, SERIE "NA",
FLANGIABILI**

PILOT ASSISTED, FLANGEABLE, SERIES "NA" OVERCENTRE

VBSO-SE-NA-FC

05.41.65 - X - Y - Z



DATI TECNICI / TECHNICAL DATA

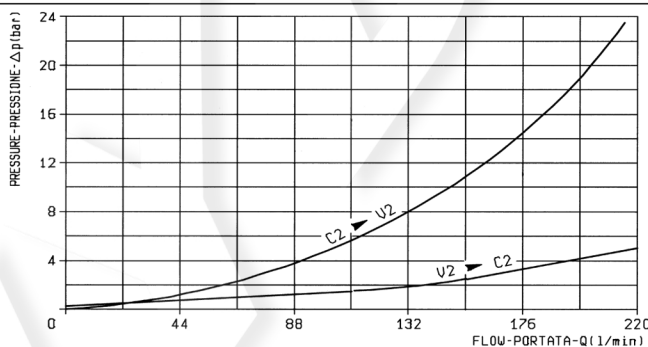
Pressione max. 350 bar
Max. pressure

Portata max. 200 l/min
Flow max.

Taratura della valvola: almeno 1.3 volte superiore alla pressione indotta dal carico
Pressure setting: at least 1.3 times the load induced pressure

Cappellotto per piombatura Codice/Ordering code
Sealing Cap 03.05.01.005

Peso 3.25 kg
Weight



**X RAPPORTO DI PILOTAGGIO
PILOT RATIO**

03 8 : 1

10 2.8 : 1

MOLLE / SPRINGS

Z	Campo taratura min - max bar Adj. press. range bar	Incremento press. bar / giro vite Press. increase bar / turn	Taratura standard bar (Q = 5 l/min) Std. setting bar (Q = 5 l/min)	Cod. ordinazione Ordering code	Colore Colour
20	60-210	36	200	03.51.01.067	verde green
35	100-350	62	350	03.51.01.057	giallo yellow

Y ATTACCHI / PORT SIZE

Y	V2-C2	PIL-M
05	Ø 19 (1)	Ø 5